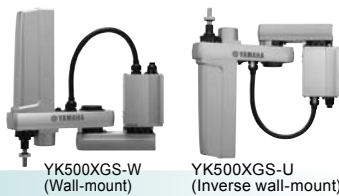


YK500XGS

Wall-mount / inverse type

● Arm length 500mm

● Maximum payload 10kg



Ordering method

YK500XGS

Model	Installation method ^{Note 1}	Z axis stroke	Tool flange	Cable
	W: Wall-mount (same as per external view) U: Inverse wall-mount (upside down)	200: 200mm 300: 300mm	No entry: None F: With tool flange	3L: 3.5m 5L: 5m 10L: 10m

RCX340-4

Controller / Number of controllable axes	Safety standard	Option A (OP.A)	Option B (OP.B)	Option C (OP.C)	Option D (OP.D)	Option E (OP.E)	Absolute battery
--	-----------------	-----------------	-----------------	-----------------	-----------------	-----------------	------------------

Specify various controller setting items. RCX340 ▶ **P.502**

RCX240

Controller	CE Marking	Regenerative unit	Expansion I/O	Network option	IVY System	Gripper	Battery
------------	------------	-------------------	---------------	----------------	------------	---------	---------

Specify various controller setting items. RCX240/RCX240S ▶ **P.489**

Note 1. When installing the robot, always follow the specifications.
Do not install the ceiling-mount robot upside down or do not install the inverse type robot to a ceiling.
Incorrect installation can cause trouble or malfunction.

Specifications

Axis specifications	X-axis					Y-axis					Z-axis					R-axis									
	Arm length (mm)	200					300					200					300					-			
Rotation angle (°)	+/-105					+/-125					-					+/-360									
AC servo motor output (W)	400					200					200					200									
Deceleration mechanism	Speed reducer					Harmonic drive					Harmonic drive					Ball screw					Harmonic drive				
	Transmission method	Motor to speed reducer					Direct-coupled					Direct-coupled					Direct-coupled								
Speed reducer to output	Direct-coupled					Direct-coupled					Direct-coupled					Direct-coupled									
Repeatability ^{Note 1} (XYZ: mm) (R: °)	+/-0.01					+/-0.01					+/-0.004					+/-0.004									
Maximum speed (XYZ: m/sec) (R: °/sec)	7.6					2.3					1.7					1700 (wall-mount) 800 (inverse wall-mount)									
Maximum payload (kg)	10 (Standard specification), 9 (Option specifications)																								
Standard cycle time: with 2kg payload ^{Note 2} (sec)	0.45																								
R-axis tolerable moment of inertia ^{Note 3} (kgm ²)	0.30																								
User wiring (sq × wires)	0.2 × 20																								
User tubing (Outer diameter)	φ6 × 3																								
Travel limit	1.Soft limit 2.Mechanical stopper (X,Y,Z axis)																								
Robot cable length (m)	Standard: 3.5 Option: 5,10																								
Weight (kg)	30																								

Note 1. This is the value at a constant ambient temperature. (X,Y axes)
Note 2. When reciprocating 300mm in horizontal and 25mm in vertical directions.
Note 3. There are limits to acceleration coefficient settings. See P.531.

Note. Please consult YAMAHA when connecting other tubes and cables to the self-supporting machine harness.

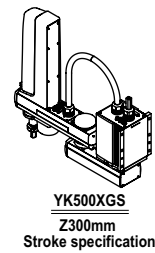
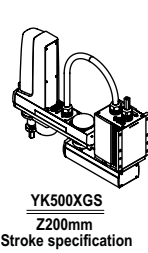
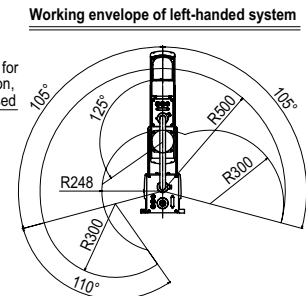
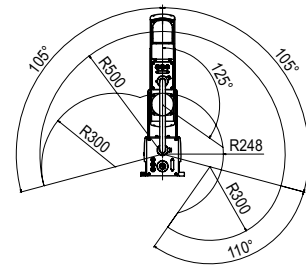
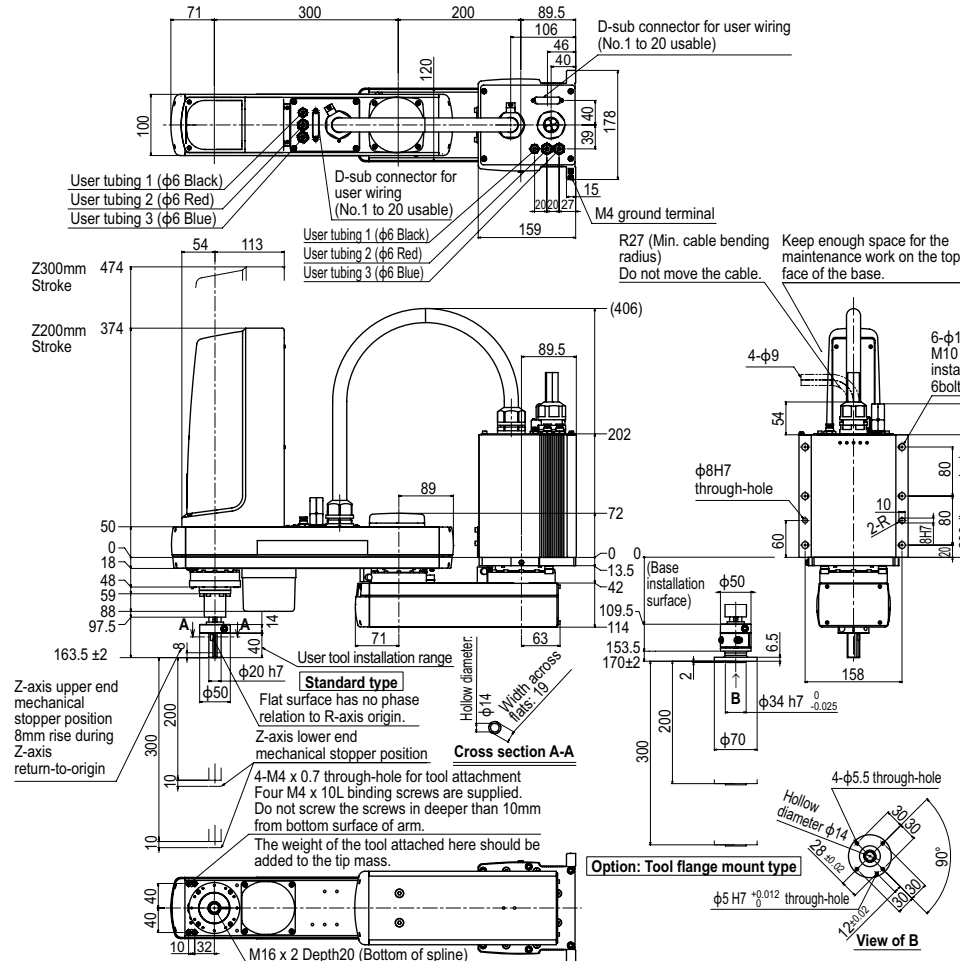
Controller

Controller	Power capacity (VA)	Operation method
RCX340 RCX240-R3	1700	Programming / I/O point trace / Remote command / Operation using RS-232C communication

Note. "Harmonic" and "Harmonic drive" are the registered trademarks of Harmonic Drive Systems Inc.
Note. The movement range can be limited by changing the positions of X and Y axis mechanical stoppers. (The movement range is set to the maximum at the time of shipment.)
See our robot manuals (installation manuals) for detailed information.

Our robot manuals (installation manuals) can be downloaded from our website at the address below:
<http://global.yamaha-motor.com/business/robot/>

YK500XGS



Note. Inverse type is installed upside down.