

Data Sheet roboFlex RF-4



Data Sheet roboFlex RF-4

Specification

	RF-4-125/1.8	RF-4-100/2.1	RF-4-80/2.3
Reach	1.8m	2.1m	2.3m
Handling capacity	125kg	100kg	80kg
Extra load on axis J3	10kg		
Number of axes	6		
Weight J2-J6	710kg	700kg	690kg
Weight J1 beam	292kg/m		
Weight Leg	1700kg (H1=4.13m)		

Performance

	RF-4-125/1.8	RF-4-100/2.1	RF-4-80/2.3	
Position repeatability	Better than $\pm 0.15\text{mm}$			
Path resolution	Better than $\pm 0.15\text{mm}$			
Working range	J1	-1000mm to depending on beam length		
	J2	+135° to -135°		
	J3	+90° to -270°	+70° to -250°	+70° to -250°
	J4	+360° to -360°		
	J5	+120° to -120°		
	J6	+360° to -360°		
Axis max. speed	J1	3.1m/s (gearbox ratio 4:1)		
	J2	120°/s		
	J3	120°/s		
	J4	225°/s		
	J5	225°/s		
	J6	225°/s		

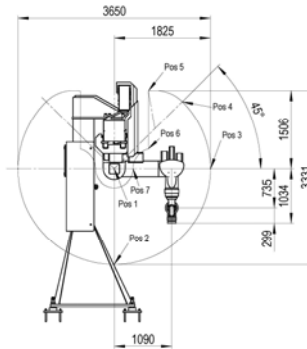
Robot Controller

	RF-4-125/1.8	RF-4-100/2.1	RF-4-80/2.3
Standard	ABB IRC5, various software options available		
Optional	KUKA KR C2, various software options available		

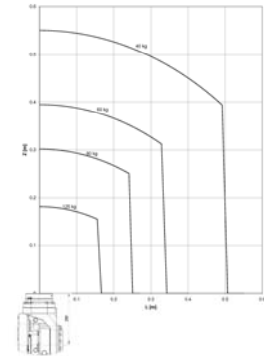
Environment

	RF-4-125/1.8	RF-4-100/2.1	RF-4-80/2.3
Temperature	+5°C (+41°F) to +45°C (+113°F) during operation		
	+70°C (+158°F) temporarily max. 24h		
	-25°C (-13°F) to +70°C (+158°F) during transportation and storage		
Relative Humidity	Max. 95% at constant temperature		
Airborne noise level	<75dB (A) Leq according to Machinery Directive 89/392 EEC		

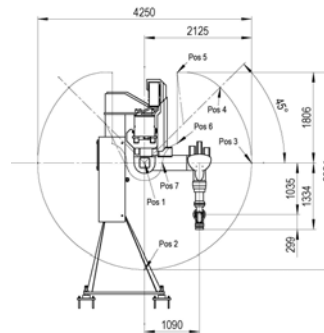
Data and dimensions may be changed without notice.



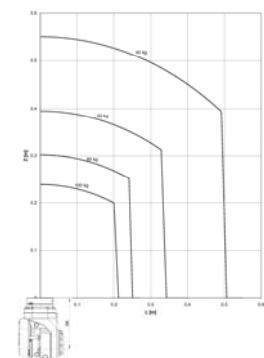
roboFlex RF-4-125/1.8 dimensions



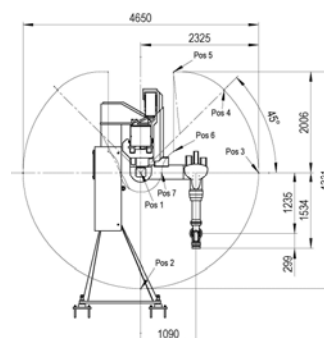
roboFlex RF-4-125/1.8 load diagram



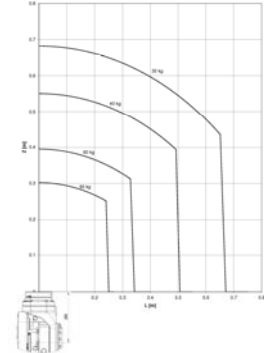
roboFlex RF-4-100/2.1 dimensions



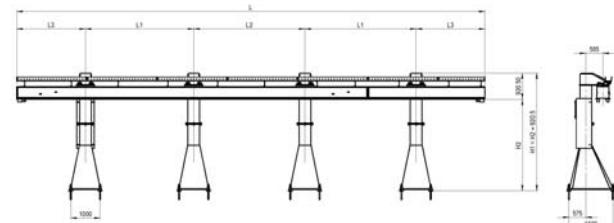
roboFlex RF-4-100/2.1 load diagram



roboFlex RF-4-80/2.3 dimensions



roboFlex RF-4-80/2.3 load diagram



roboFlex RF-4 gantry dimensions (all versions)

Module	Length L [mm] min / max	Height H2 [mm] min / max	Total Height H1 [mm]
Axis I beam	4000 to 20000 in steps of 400mm		
Support leg		2500 to 3500 in steps of 100mm	H2+920.5

Description	Max. distance L1 [mm]	Max. distance L2 [mm]	Max. distance L3 [mm]
One manipulator on axis I beam	8500	10000	3500
Two manipulators on axis I beam	7000	8500	3000